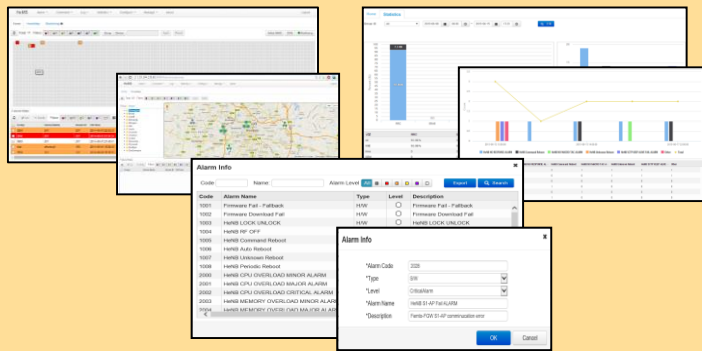


HeMS (HeNB Management System)

Key Specifications

- 1 TR-069 standard interface
- 2 TR-181/TR-196 standard data model
- 3 TS 32.593 discovery and registration procedures
- 4 CM/FM/PM Functions
- 5 File upload/download
- 6 Web based GUI

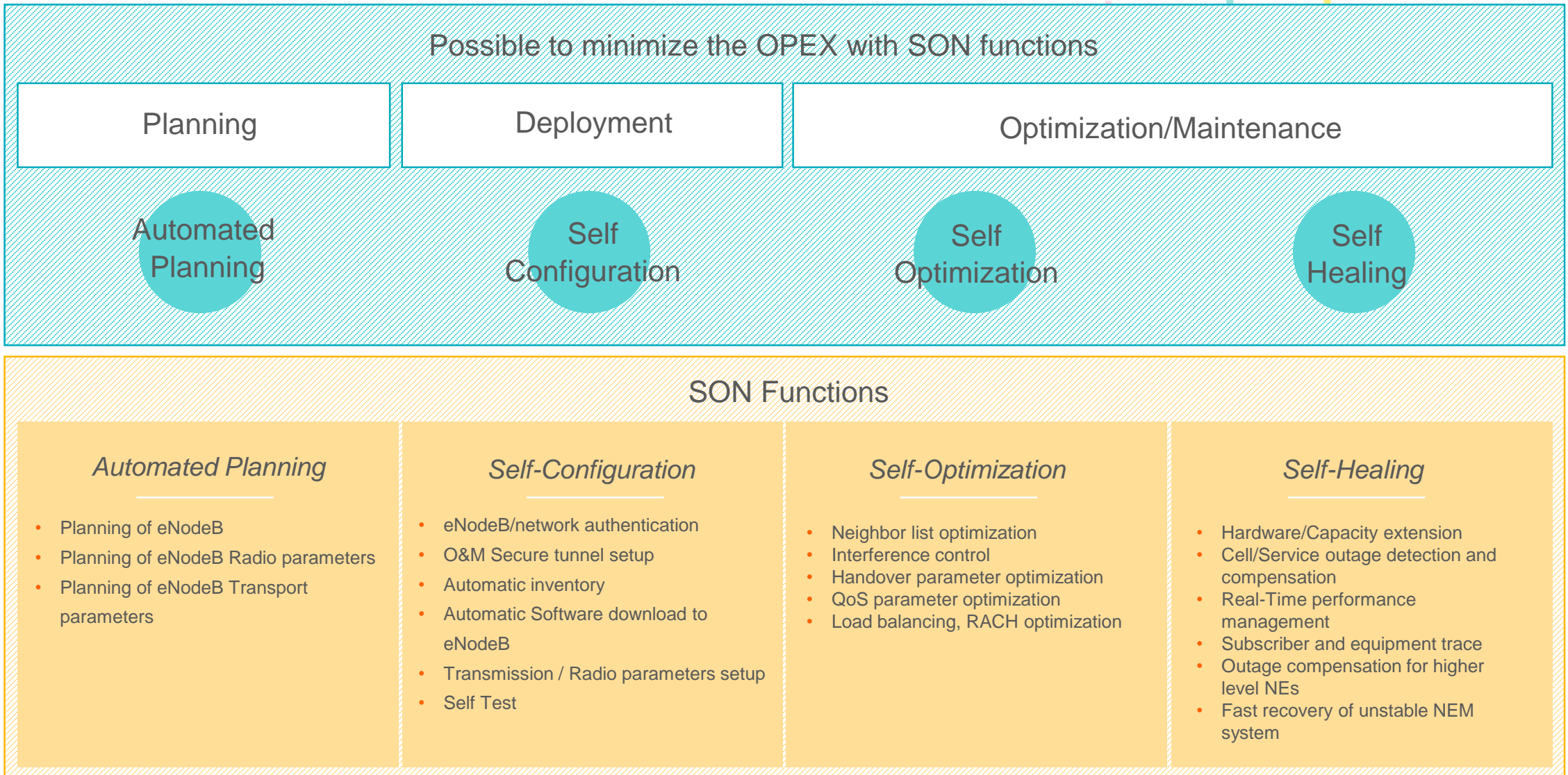


Key Functions

Category	Functions
Configuration Management	<ul style="list-style-type: none"> • HeNB configuration through RPC (Remote Procedure Call) methods • Read and write LTE stack related parameters (e.g. SIB, RRC) • Auto-configuration and provisioning • Software/firmware image management and diagnostics
Fault Management	<ul style="list-style-type: none"> • Communication / Environmental • Equipment / Synchronization • Processing / Security • Quality of service
* Performance Management	<ul style="list-style-type: none"> • RRC Connection (setup/re-establish.) • E-RAB (setup/release) • Handover (in/out) • Throughput (DL/UL/drop/loss/...) • Paging (attempts/discards) • PRB (DL/UL)

* Optional

Qucell SON Solution



Reference network configuration

