

Outdoor LTE Small Cell

Enhanced LTE experience closer to Subscribers



| Items | Specification |
|-------------------------|--|
| Concurrent active users | 32 / 64 |
| Maximum TX Power | 10W/path, 20W/path, 2W/path & 5W/path |
| MIMO / Antennas | 2 x 2 MIMO, External Antenna |
| Dimensions | 440 x 210 x 195 (L x H x D / mm) * Excluding mount kit |
| Weight | 18kg |

Expands LTE coverage to rural areas

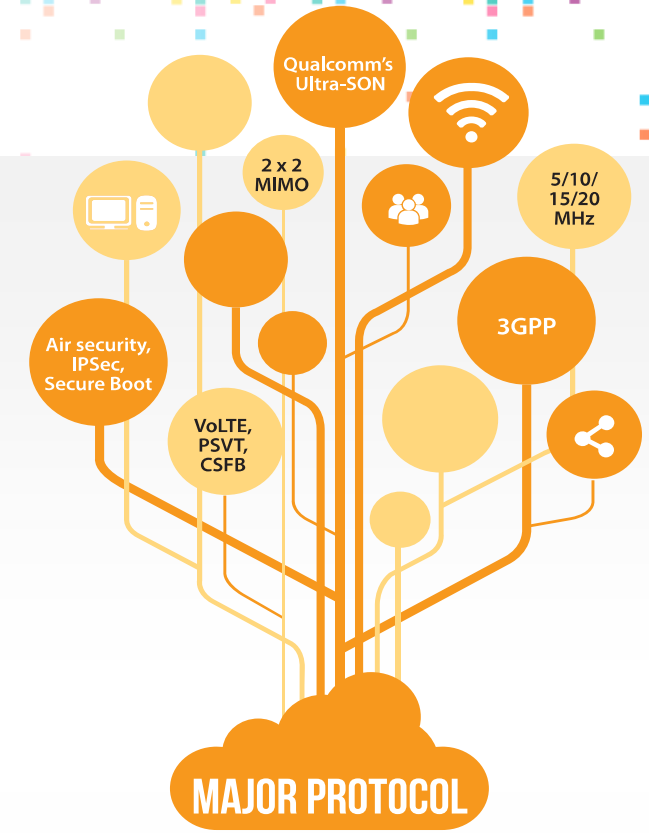
Easily mountable on building walls or lampposts

Low CAPEX/OPEX



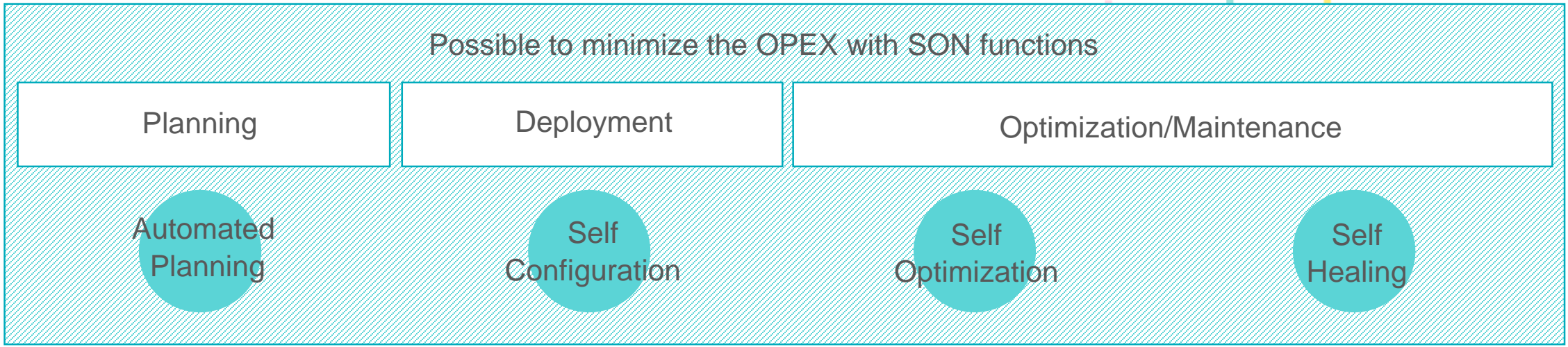
Protocol S/W Features

- 1 3GPP Compliant Release 9/10 LTE HeNB
- 2 Scalable bandwidth with 5/10/15/20MHz
- 3 2 x 2 MIMO
- 4 Air security, IPsec, Secure Boot
- 5 Supports VoLTE, PSVT, CSFB
- 6 Intra/inter-frequency handover, X2 & S1 based handover
- 7 Gigabit Ethernet Backhaul Connection
- 8 IEEE 1588v2 PTP / NTP Synchronization, NL Synchronization, GPS* Synchronization
- 9 TR-069 standard interface & TR-181/TR-196 standard data model for Management System
- 10 SON



* GPS Synchronization is for TDD Feature

Qucell SON Solution



SON Functions

| <i>Automated Planning</i> | <i>Self-Configuration</i> | <i>Self-Optimization</i> | <i>Self-Healing</i> |
|--|---|--|--|
| <ul style="list-style-type: none">• Planning of eNodeB• Planning of eNodeB Radio parameters• Planning of eNodeB Transport parameters | <ul style="list-style-type: none">• eNodeB/network authentication• O&M Secure tunnel setup• Automatic inventory• Automatic Software download to eNodeB• Transmission / Radio parameters setup• Self Test | <ul style="list-style-type: none">• Neighbor list optimization• Interference control• Handover parameter optimization• QoS parameter optimization• Load balancing, RACH optimization | <ul style="list-style-type: none">• Hardware/Capacity extension• Cell/Service outage detection and compensation• Real-Time performance management• Subscriber and equipment trace• Outage compensation for higher level NEs• Fast recovery of unstable NEM system |

Reference network configuration

