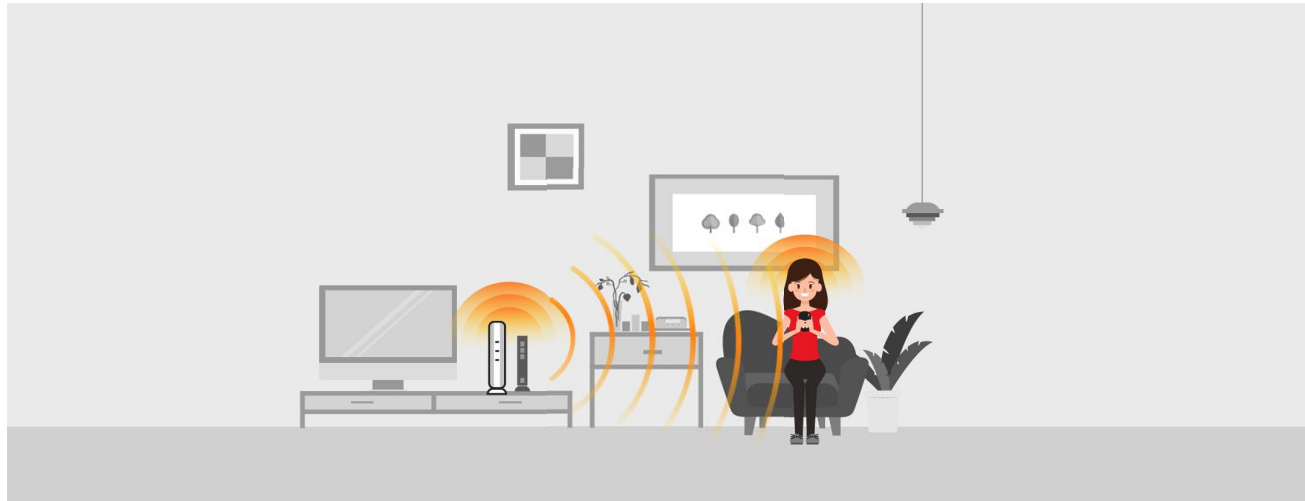


# Enhancing service improvement for home users

The Smart **Small Cell** Solutions



Smartphone-driven demand for mobile data and voice service is on the rise. One of the goals of the operators is to not only extend coverage but also to enhance the end-user experience at home. Small cell provides clear voice call and better security than WiFi.



## The Solution

- Simple connection to existing broadband cable will provide full bar LTE signal inside of homes and LTE shadow areas
- High performance indoor data throughput to meet heavy data demands and clear voice call
- This will allow operators to generate additional revenue from increased usage and, potentially, new services